



# Mill Stream BUZZ...

SUMMER 2016

Reaching Children, Serving the Church  
SINCE 1946

"Jesus Christ is the same yesterday and today and forever." Hebrews 13:8 (NIV)  
This summer's Bible theme holds more truth for us in today's world than ever before. With the challenges of ministry ahead we can be confident that God never changes...just as in the times of the Israelites seeking a

new land, God goes before us directing our efforts in completing the directive he has given us in *Reaching Children and Serving the Church* for his Kingdom.

Won't you join and partner with us as we seek to share the Gospel with children, teens and adults who are searching for the truth?

Please enjoy reading the updates in this letter as to what God is accomplishing through this camp ministry.

## You're Invited to Join us for our Annual Open House & Luncheon Banquet

On Saturday, September 24th

Enjoy a great  
Roast Beef  
lunch!!

12 Noon at

Come and enjoy  
the Fall colours!

Mill Stream Bible Camp & Retreat Centre

880 Old Mill Road, Omeme, Ontario

There is no charge for this luncheon, however an offering will be taken towards the banquet costs and the Cabin Replacement Project.



TO RESERVE YOUR SEATS  
Call Toll Free 877-979-9990  
Email office@millstream.camp

LIMITED SEATS - PLEASE RSVP BY SEPTEMBER 19th

**PUT IT ON YOUR CALENDAR NOW...ALL ARE WELCOME...WE HOPE TO SEE YOU HERE!**

Come and see what God is doing!

Come and see the finished new cabins now with gas fireplaces

Open house will start at 11am

Luncheon and program at 12 Noon

Open House will continue after Lunch

Join us for an updates about our new cabin buildings and meet and hear testimonies from some of our Summer Staff members.



Join us for an update from our National Director, Phil Whitehead, on the direction of BCM Canada.



Special music will be directed by our own Summer Staff.

## Message from the Director

What a summer to remember!

God has once again given us a great summer for camping ministries.

With the extremely hot and dry weather came wonderful opportunities to spend most of our time outside in God's beautiful creation. What better way is there to expose campers to Christ than having them recognize God's amazing detailed work in everything we see and explore.

God once again put together a team of amazing young men and women dedicated in serving God. We were so blessed when God provided us with all of our necessary staff early with the exception of one week of nursing in which Cindy pulled the extra duty.

God never changes and answered prayers by bringing us children and teens who are in need of hearing the hope and Good News of Christ, several for the first time. As a result your prayers and support, 25 children and teens gave their lives over to Christ! We continue to rejoice in what a great God we serve.

Larry Chupa aka "LarryBoy"

# What's happening?

## Winter and Spring Projects!



### The New Tuck Shop...Done!

The new tuck shop was completed in time for this past summer. An old structure was re-purposed and was placed near the

edge of the parking lot.

With the new tuck shop being centrally located check-in/check-out days flow more smoothly.



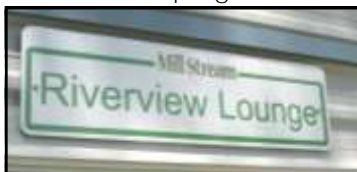
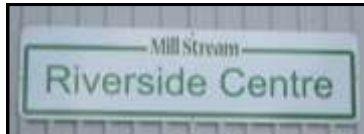
The inside serving counter has worked great with the

installation of interlocking brick sloped ramps at the entrance and exit also making it wheelchair accessible.

### More new signage...

After 12 years we finally decided to give the "New" or "Big" building a name.

The gymnasium, dining hall, kitchen, patio complex has been named "**Riverside Centre**". This name properly expresses the facility as first, it is obviously right beside the river and secondly has become the centre of activity for both our summer camping and retreat ministries.



New signage was also placed on what is becoming our "**Riverview Lounge**".

The lower floor of the office is no longer a games room and tuck shop. We have begun the transformation of this space into a lounge. This fall the remaining walls will be knocked down opening up this area into a comfortable meeting space for up to 30 people.

# 2016 Summer Camp Staff

God met our need by providing us with dedicated summer staff!



Mill Stream 2016 Summer Staff

Each year we are excited to see who God will bring to camp and how He will use them. This year was no exception as God brought 7 new staff members into the Mill Stream family with almost all returning from last summer.

## 2016 Summer Camps

This summer was one of the hottest and driest we have experienced in many years.

Yet, we still had a very fun and exciting summer as we enjoyed our "**Superheroes**" theme.

As our Bible theme was based on the life of Jesus, Knowing Him and Making Him Known, the campers found that Jesus is the only superhero that they need in their lives.



## 2016 Summer Camp Rentals

For their 16th year Handi\*Camp, which is a ministry of BCM International Canada, held one week of camp for challenged children in August.



This year we also offered a time period to allow us to *Serve the Church* by opening our summer schedule at the end of August for a Christian rental group. The group that rented this period works with teenagers between the ages 13 to young adults.





## Our New Updated Website and Email Address

This past January 1st we launched a new updated website with more information about our ministries and facilities than ever before.

Our new site offers more pictures and offers on-line camper registrations and rental inquiries.

Our website and email address changed as well to:

[www.millstream.camp](http://www.millstream.camp) and [office@millstream.camp](mailto:office@millstream.camp)

The ".camp" is a much easier extension to remember.

Please update your bookmarks and address books to reflect the new information to keep in touch.

The old web site and email addresses will not be functional after January 1st, 2017!



This is our 11th year running our LTP (Leadership Training Program) Camp.

This successful program has prepared 77 teens to become servant leaders and future staff including the 8 who attended this year!



Out of the LTP'ers who attended from 2006 to 2015 we've had 32 return as staff over the years and 7 come back as senior leadership staff! Others have gone to become leaders in other ministries.



## Summer Projects?

Yes!!! With the help and leadership of a summer maintenance coordinator we have been able to complete some summer projects!

It has been great to have the additional help in our maintenance department by having adult leadership coordinating our efforts.

### Log Splitting

This summer we were able to finally finish splitting all of our firewood that our volunteers began with in the spring. This wood has been piled at the edge of the bush near the campfire area for several years. It is wonderful to see it all split and stacked to serve our campfires for several years to come.



### Lane Widening

We were also able to widen the laneway so that in most places it is almost 2 cars wide now. We will continue to improve the laneway this fall.

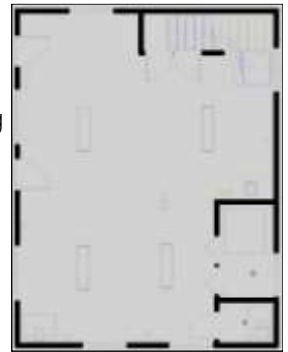


### New Riverview Lounge

The transformation of the lower level of the office will continue this fall with the addition of hot and cold running water and a sewer line being trenched to the office which will allow for a washroom, vanity and coffee service centre to be added. Eventually this new meeting room will have a gas fireplace



for comfortable heating and a great atmosphere as well. This added space will allow us to book multiple groups during the same time period. Our goal is to have this space completed and to be in operation by early spring. Please contact us if you would be interested in helping with this project by either volunteering some of your time or providing a financial donation or both.



Proposed floor plan for Riverview Lounge

**Thank you to our fall & winter volunteers** who will be returning this fall to serve another year.

Please remember our volunteers in prayer as some have suffered loss and others are dealing with several health issues. Without these men and women it would not be possible for Mill Stream to offer such wonderful accommodations and programs.

### Mailbox Bible Club...



Campers! Another great summer of camps is completed and Ruby is waiting to hear from you.

You can reach Ruby at 679 Blackwood Blvd. Oshawa, ON L1K 0G7 or **email the camp and we'll put you in touch!**

If you prefer to complete your lessons on-line you can go directly to the Mailbox Club website at

[www.mailboxclubonline.org](http://www.mailboxclubonline.org)

### Prayer Partners

Prayer is the most important way for you to support this ministry. Please contact us if you wish to start a prayer support group or join us the second Tuesday each month at Marilyn's home at 163 Gibbons Street in Oshawa. You can contact us at the camp at 877-979-9990 or email at [office@millstream.camp](mailto:office@millstream.camp) for further information.



*Mill Stream Buzz is a camp ministry newsletter for Campers, Parents, Staff and Supporters of Mill Stream*



Please contact us for additional copies or if you wish to be added to our mailing list, or visit [www.MillStream.camp](http://www.MillStream.camp) and follow the links for an on-line version.

Toll Free Phone 877-979-9990 Fax 705-799-1465 Email [office@MillStream.camp](mailto:office@MillStream.camp)  
Postal Address 880 Old Mill Road, Omeme, ON, Canada K0L 2W0



Located just 15 minutes southeast of Lindsay  
and 45 minutes northeast of Oshawa